


**CONSTRUCTION / CLASSIFICATION**

Year of construction	2010
Classification	Bureau Veritas ✕ HULL ✕ MACH ✕ AUT_UMS, Tug Fire-fighting 1 -water spraying, Unrestricted navigation
IMO number	9537537
Call sign	9HA4795
Flag	Malta
Port of registry	Valletta
Trading area	Worldwide/Unrestricted

**FEATURES**

Accommodation	11 berths, 3 single cabins and 4 double cabins
Bunker capacity	378 cbm Fuel: 378 m <sup>3</sup> Fresh water: 63 m <sup>3</sup>

**PROPULSION AND MAIN SYSTEMS**

Main engines	2 x 2,600 kW, each driving 1 azimuth propeller
Propulsion	2 x Schottel SRP 2020 FP azimuthing propellers in KORT nozzles. Tunnel thruster fwd 1 x 300 kW Schottel CPP
Bow thruster	1 x Schottel STT 170 t, 300 kW
Fire fighting	Class 1 FIFI (2,400 cbm/h water spray)

**MAIN DATA**

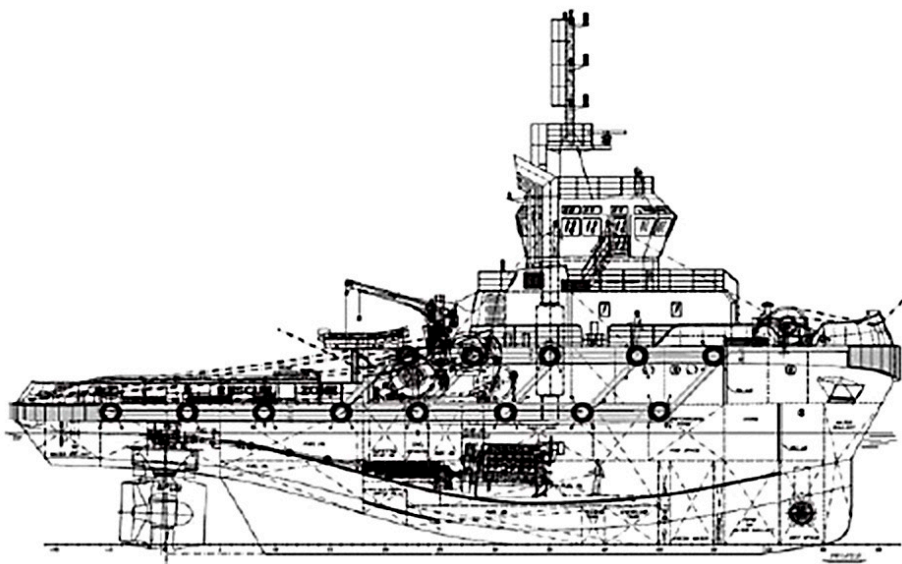
Length overall	40.65 m
Breadth moulded	12.70 m
Depth moulded	6.90 m
Max draught	6.30 m
Design draught	5.86 m
Gross tonnage	810 GT
Bollard pull ahead	90 t
Speed max	13 kn
Speed economic	9 kn
Deck area	125 m <sup>2</sup>
Deck strength	5 t/m <sup>2</sup>

**DECK EQUIPMENT**

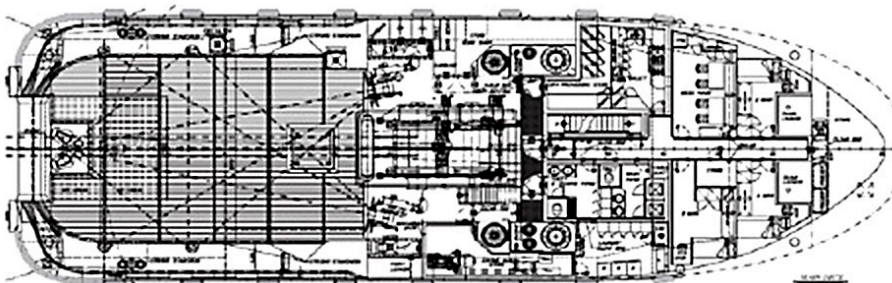
Towing/anchor handling winch aft - 3 drums in waterfall:	
Upper drum	(Sea towing & rig chain handling) automatic spooling device
Brake holding	200 t 1 <sup>st</sup> layer
Pull	80 t 1 <sup>st</sup> layer - 6.25 m/min
Drum capacity	1,200 m, diameter 54 mm in 10 layers

## DECK EQUIPMENT (CONTINUED)

Middle drum	(Anchor handling & harbour towing) spil drum type, 1 warping head of 800 mm
Brake holding	250 t 1 <sup>st</sup> layer
Pull	105 t 1 <sup>st</sup> layer - 9.4 m/min
Drum capacity	1 x 900 m, diameter 54 mm 1 x 430 m, diameter 54 mm
Lower drum	(rope reel / storage drum) split type



## SIDE VIEW



## TOP VIEW DECK LEVEL