

# CAPABILITY SHEET

## DV HOPPER DREDGER TRAILING SUCTION HOPPER DREDGER POSITIONING AND PRODUCTION MODULE



### INTEGRATE PRECISE 3D POSITIONING

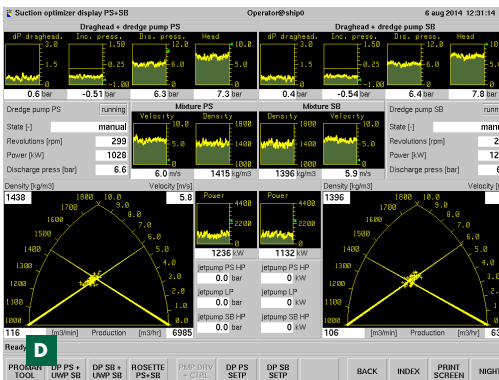
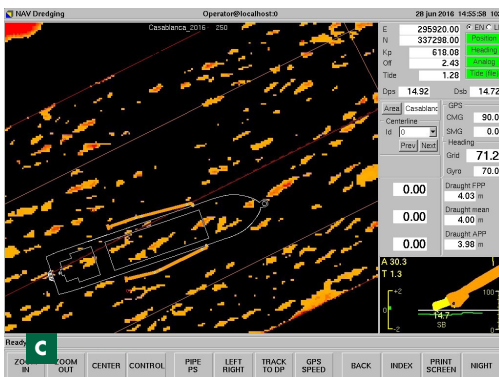
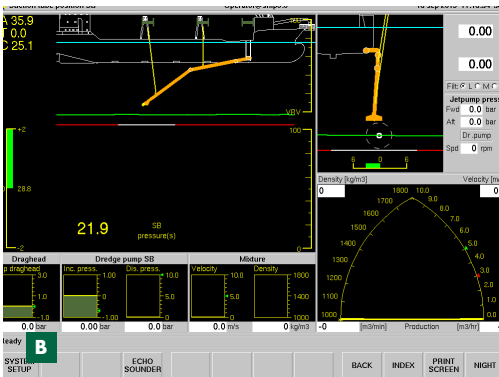
DV Hopper Dredger is the integrated positioning and dredging production module and is custom-tuned to each Boskalis Trailing Suction Hopper Dredger.

The module integrates precise 3D positioning and project-specific design information, survey results, and dredger production- and status information. Various displays and calculations are available to assist the operator in optimizing the dredge process.

All information can be viewed on independent graphical displays at any display station on board. These real-time displays enable dredging operators to accurately dredge to the required design. During dredging, on-screen bathymetry data are updated in real-time to show project progress between hydrographic surveys.

All process and position parameters are logged at a selected time interval in ASCII format and automatically transferred to shore daily. These parameters include draghead and vessel position (XYZ), and dredge production data. Reports are generated automatically on a production cycle basis.

Boskalis operators are trained to use DV Hopper Dredger in a training simulator at Boskalis head office in the Netherlands.



- A DV Hopper Dredger training simulation at the Boskalis premises in the Netherlands
- B DV Hopper Dredger suction tube position display
- C DV Hopper Dredger Navigation Display
- D DV Hopper Dredger dredging process optimizer

Royal Boskalis Westminster N.V.  
PO Box 43  
3350 AA Papendrecht  
The Netherlands  
T +31 78 69 69 000  
F +31 78 69 69 555  
royal@boskalis.com  
www.boskalis.com