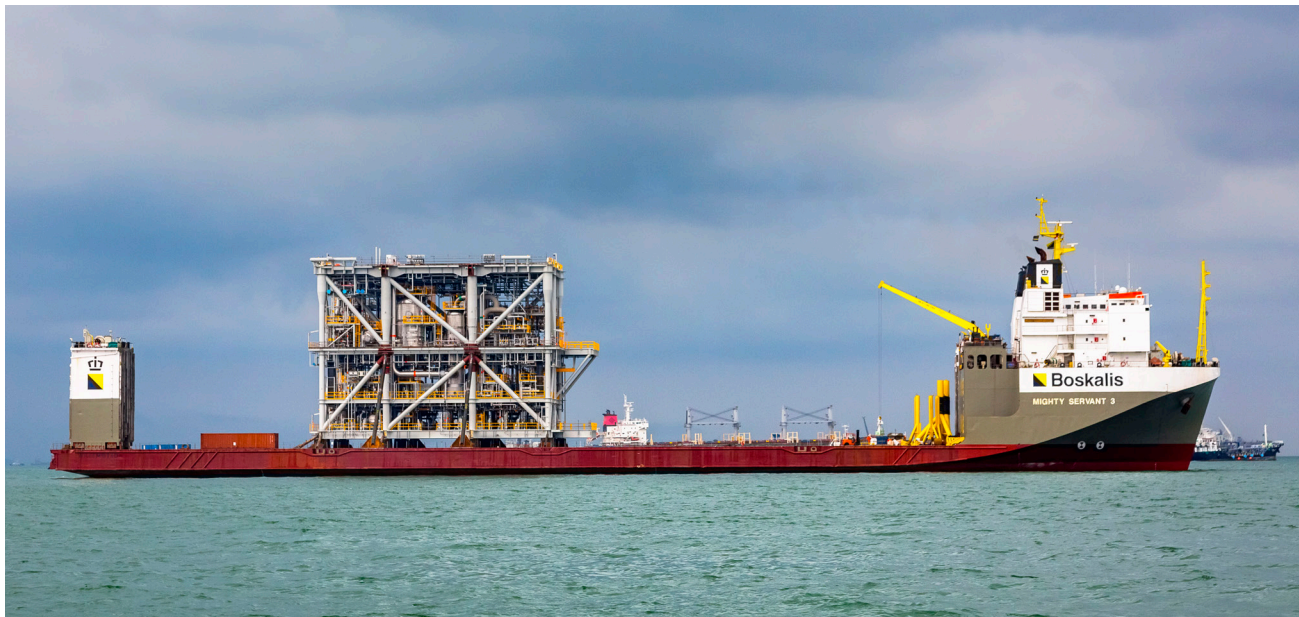


EQUIPMENT SHEET

MIGHTY SERVANT 3

SEMI-SUBMERSIBLE HEAVY TRANSPORT VESSEL



CONSTRUCTION/CLASSIFICATION

Built by	Oshima Yard Nagasaki Japan
Year of construction	1984
Classification	Bureau Veritas ⚓ HULL, ⚓ MACH, Special service, Semi submersible heavy lift vessel, unrestricted navigation, AUT-UMS (SS), MON-SHAFT
IMO number	8130899
Flag	Curaçao
Port of registry	Willemstad

MAIN DATA

Length overall	181.23 m
Breadth moulded/max	40.00 m
Depth	12.00 m
Draft submerged at FPP/APP	22.00 m
Summer draft	9.48 m
Deck space [l x w]	140.00 x 40.00 m
Deadweight	27,720 t
Trial speed	15.0 kn
Total installed power	14,220 kW
Main engines	2 x 6,500 kW

Main propulsion	2 x 4-bladed c.p. propellers driven by four E-motors of 3,100 kW each
Bow thruster	2 x 500 kW

NAVIGATION EQUIPMENT

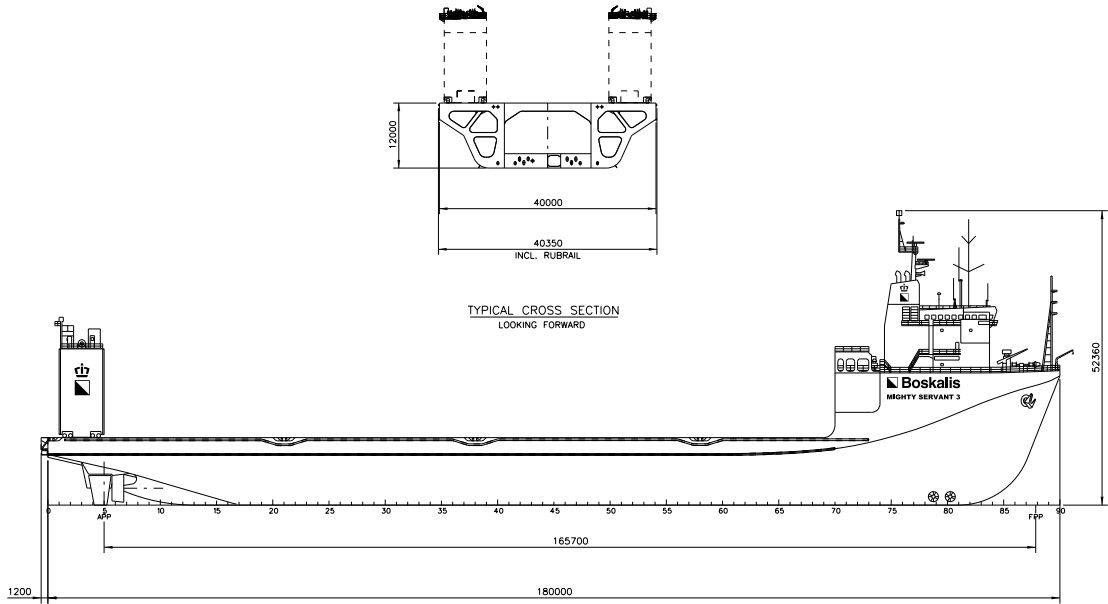
- Two radar, one ARPA coupled
- One GPS navigator
- Echo sounders fore and aft
- Magnetic log
- Two gyro compasses
- SPOS - Ship Performance Optimisation System
- OCTOPUS - Octopus onboard system (ship motion monitoring and decision support system by Amarcon)

COMMUNICATIONS EQUIPMENT

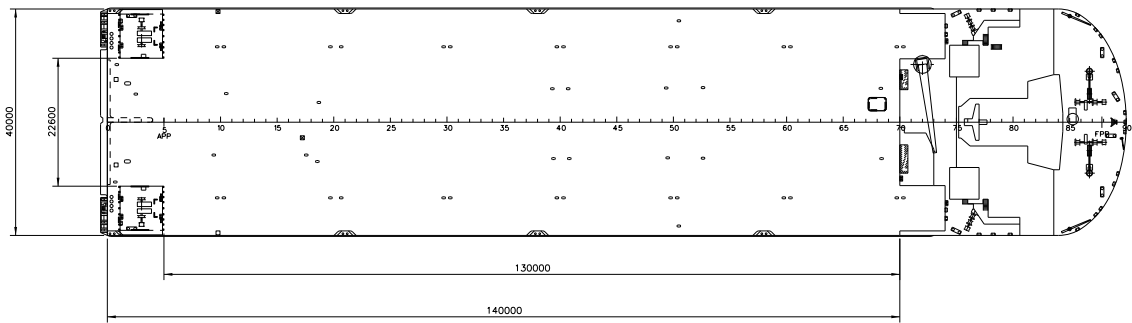
- Inmarsat A and C (telex/telephone/fax)
- SSB radio telephony
- Telex over radio
- VHF radio telephony
- Weather facsimile
- Iridium mobile phone
- NAVTEX receiver
- GMDSS

BALLASTING

- Two main ballast pumps 2,000 m³/hr@ 30 m head
- One fire gen. service pump 90 m³/hr@ 60 m head or 170m³/hr@ 30 m head
- One fire bilge pump 90 m³/hr@ 60 m head or 170 m³/hr@ 30 m head
- One emergency fire pump 45 m³/hr@ 60 m head
- Four deballast compressors 3,000 m³/hr@ 1atg
- Two ejector pumps 150 m³/hr@ 30 m head



SIDE VIEW



TOP VIEW DECK LEVEL