

## CONSTRUCTION / CLASSIFICATION

Year of construction	2015
Registration	Singapore
Classification	ABS A1, + AMS - Heavy Lift Vessel
Call sign	9V2514

## MOORING WINCHES

8 Point mooring 60 t cap. 1,200 m of 46 mm dia. wire rope

## WINCHES

2 units cargo winches capable of pulling 20 t at 10 m/min	
2 unit class anchor winch for handling the 6,975 kg HHP bow anchor via 76 mm grade 3 anchor chain	
Luffing	2 units luffing winches providing max. luffing speed of 1.00 m/min at full load
Main hoist	4 units main hoisting winches for A-frame and 2 units for Jib, each capable of hoisting speeds 2 m/min at full load of 1,250 t and 5 m/min at light/no load
Jib adjustment	2 units jib adjustment winches, mounted on the A-frame, for adjustment of the Jib without load from 00 to 400 in respect to the A-frame
20 t aux. hoist	2 units aux. hoisting winches for A-frame and 1 unit for Jib each capable of hoisting speeds of 10 m/min at full load of 20 t

## MAIN DATA

Gross tonnage	16,805 GT
Nett tonnage	5,041 t
Length overall	106.42 m
Beam overall (moulded)	52.00 m
Depth (moulded)	10.00 m
Displacement	26,456 t (even keel @ 5.50 m)
Speed	7 kn (4 x each about 2,000 kW)
Deck loading	20 t/m <sup>2</sup>
Fuel bunker capacity	2,021 m <sup>3</sup>
Fresh water capacity	474 m <sup>3</sup>
Ballast water capacity	14,438 m <sup>3</sup>

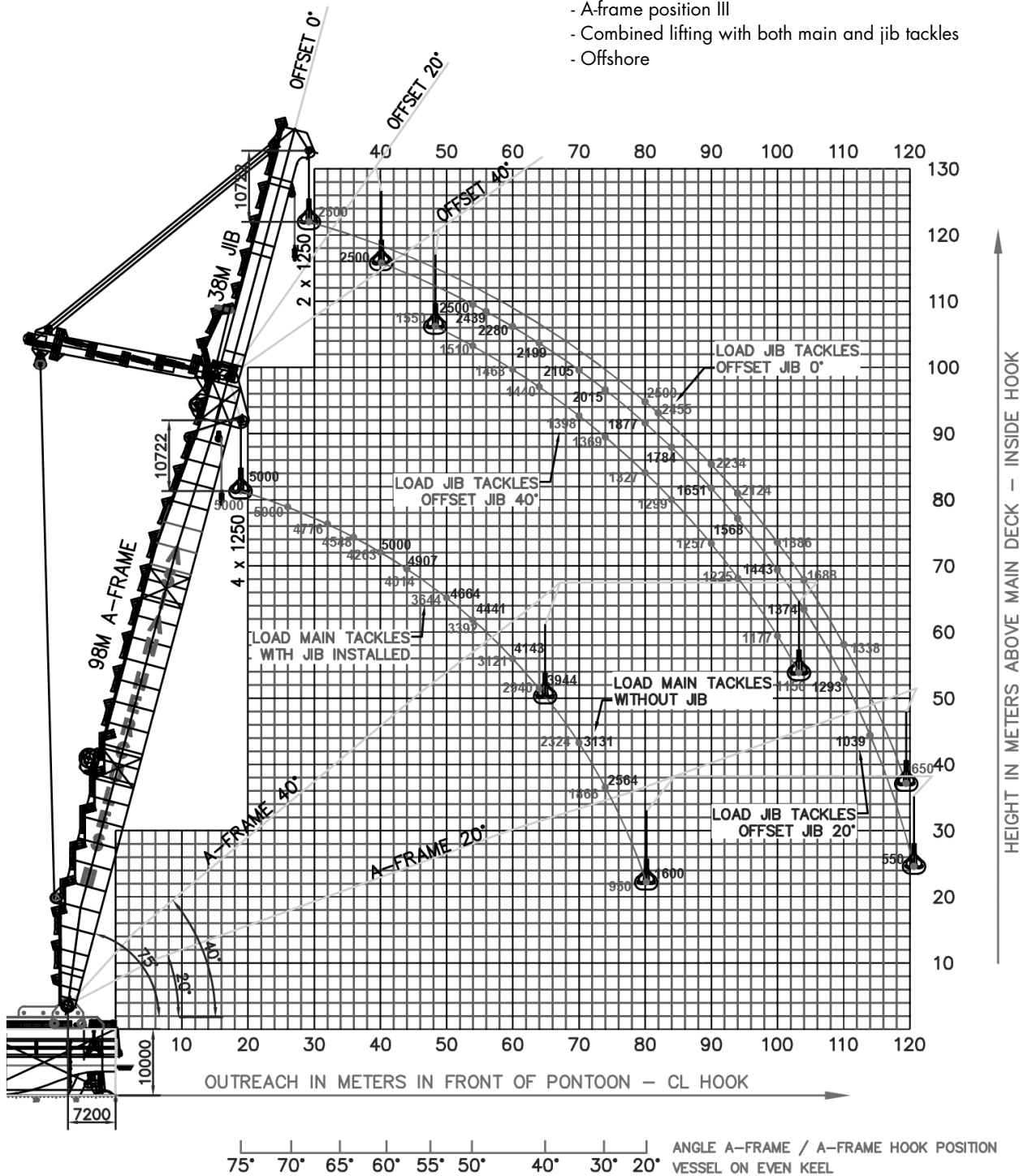
## FEATURES

Accommodation for 45 persons

## GENERATORS

Main generator	4 units diesel engine driven generators of output capacity 4,364 kW in total
Emergency / auxiliary generator	1 unit diesel engine driven generator of output capacity 750 kW

- All loads are in metric tonnes and for inland water
- All load capacities are without traverses
- Following load capacities are on request:
  - A-frame position III
  - Combined lifting with both main and jib tackles
  - Offshore



**GUIDELINE CAPACITY DIAGRAM -**  
**A-FRAME IN POSITION I**