



CONSTRUCTION/CLASSIFICATION

Year of construction	2011
Classification	Bureau Veritas ✕ HULL ✕ MACH, Tug/Fire fighting ship 1 -water spraying, Anchor handling vessel, Unrestricted navigation ✕ AUT-UMS
IMO number	9537549
Call sign	9HA4885
Flag	Malta
Port of registry	Valletta

FEATURES

Airconditioned accomodation for 10 persons
Crane 2 t SWL @ 12 m outreach
Capacity fire fighting monitors: 2 x 1,200 m ³ /hr
Bunker capacity: potable water 64 m ³ , fuel oil 365 m ³ , foam 51 m ³

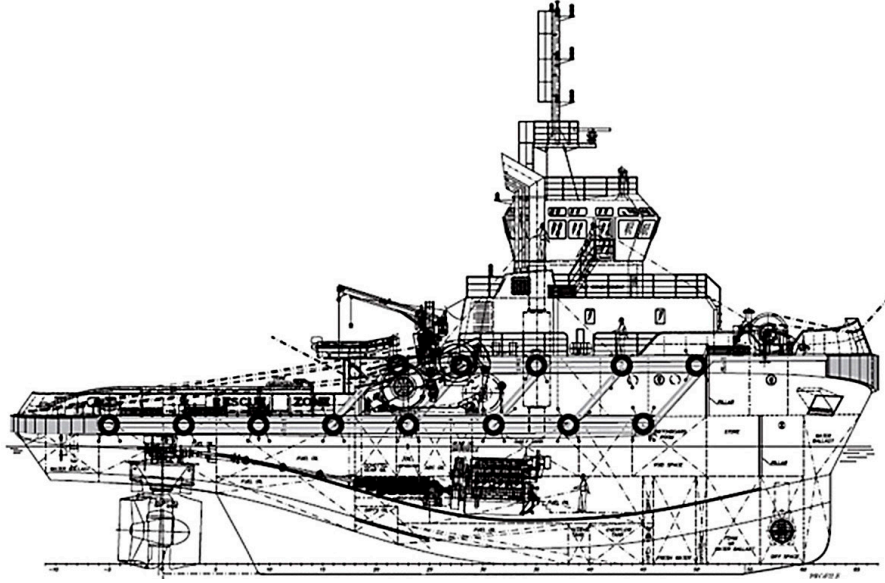
DECK EQUIPMENT

Deck area (aft)	125 m ²
Fore winch	Hydraulic, double drum - 200 t brake load. Line pull 50 t @ 10 m/min. on 1 st layer
Aft winch	Hydraulic, Waterfall (2 drums) - 200 t brake load. Upper drum - line pull 80 t @ 6.25 m/min. on 1 st layer. Lower drum - line pull 105 t @ 9.4 m/min on 1 st layer

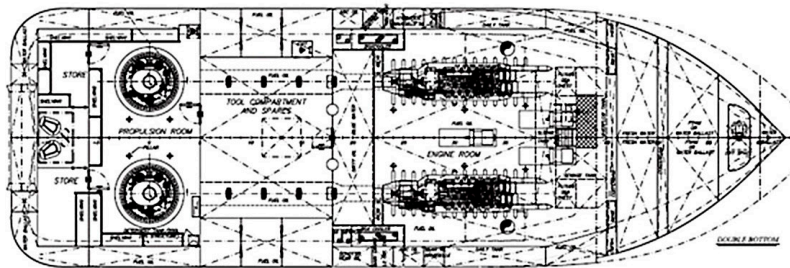
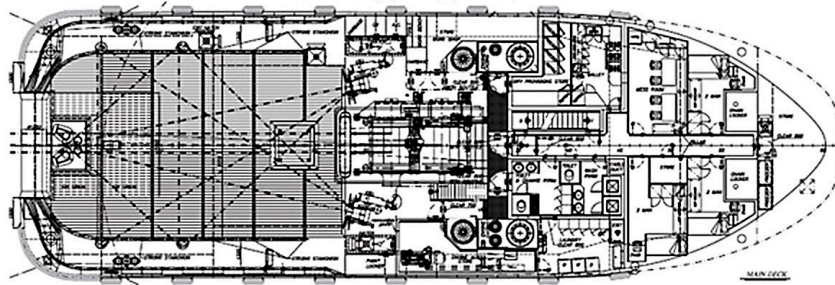
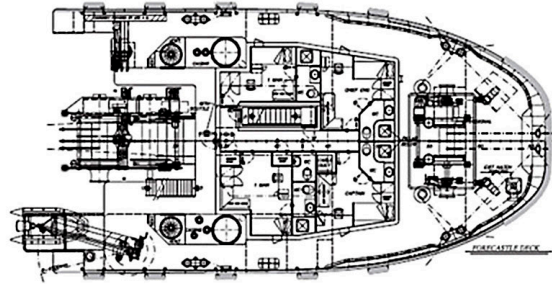
Stern roller	5.15 m x 1.25 m, 200 SWL
Tugger winch(es)	2 x 15 t @ 15 m/min
Towing pins	2 x Karmoy 300 t SWL
Stopper pins	2 x Karmoy 160 t SWL

MAIN DATA

Gross tonnage	810 GT
Length overall	40.65 m
Breadth moulded	12.70 m
Max. draught	5.50 m
Main engines	2 x ABC 12V DC
Total power	5,200 kW
Propulsion	2 x fixed pitch ASD propeller
Bow thruster	1 x 300 kW
Bollard pull (ahead)	90 t
Bollard pull (astern)	79 t
Speed ahead (max.)	14 kn
Speed ahead (economic)	9 kn



SIDE VIEW



TOP VIEW DECK LEVEL