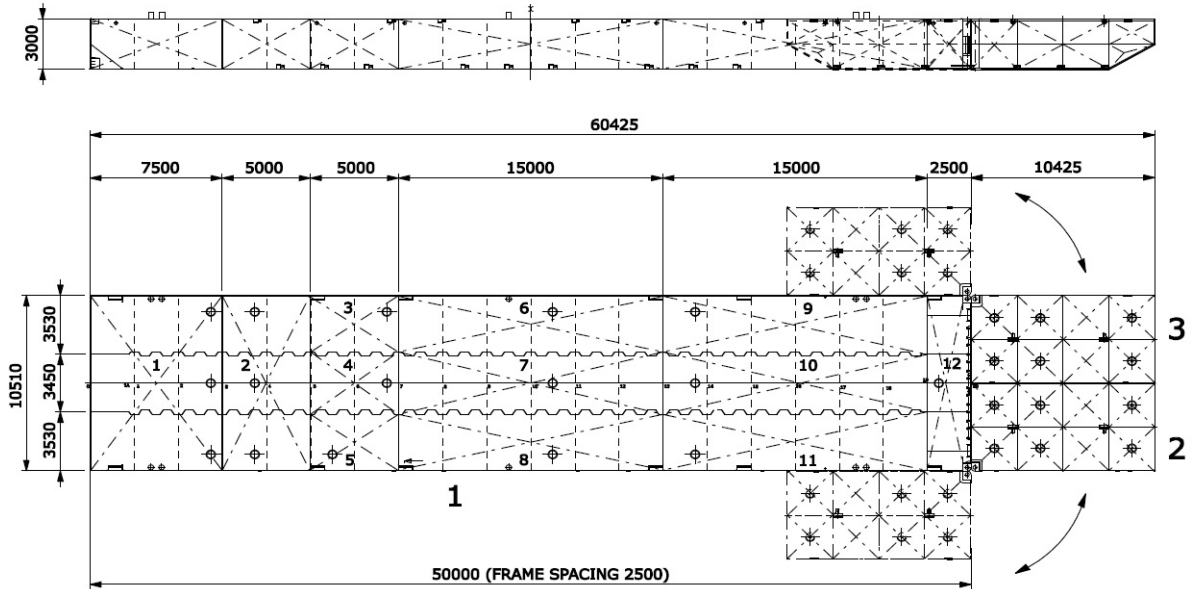
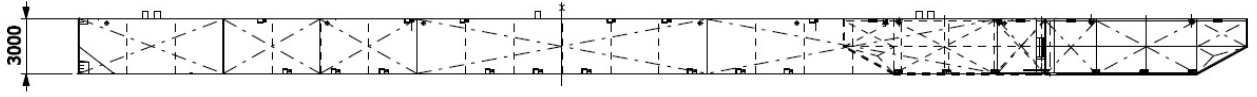


EQUIPMENT SHEET

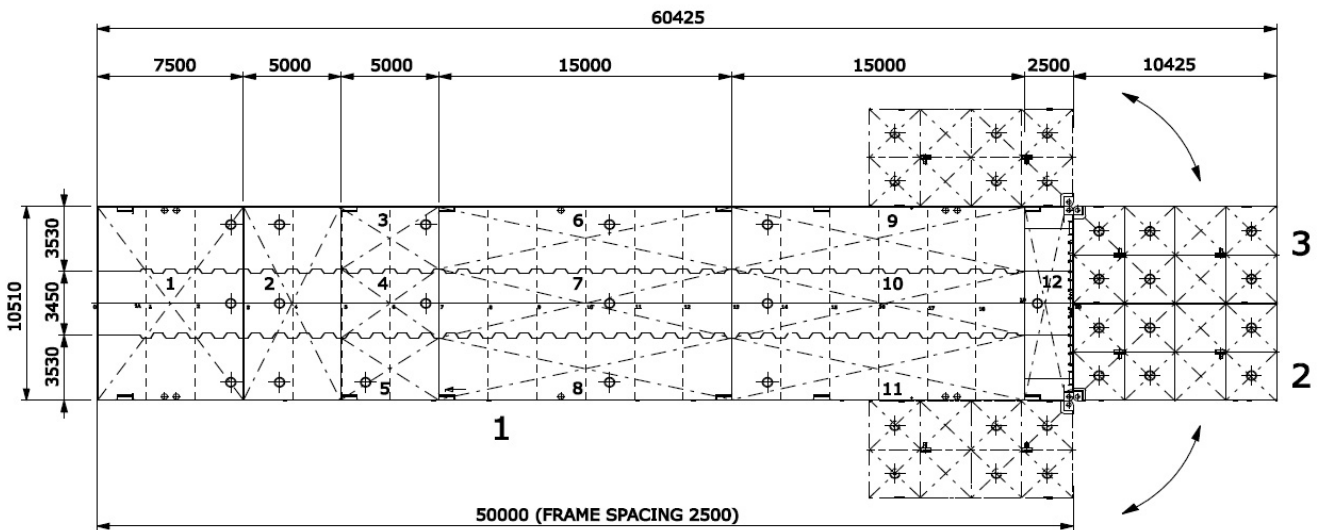
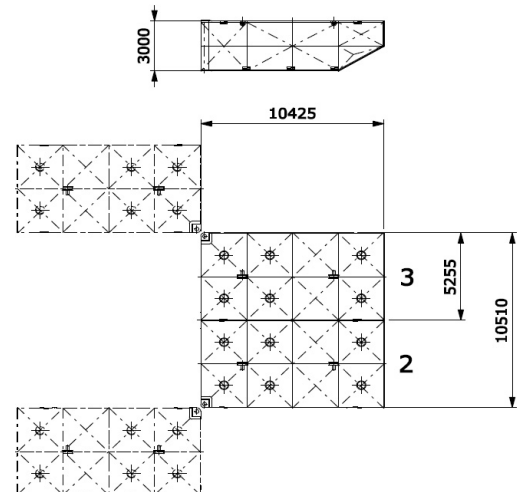
HUISLIFT 2
PONTOON TA



CONSTRUCTION / CLASSIFICATION		MAIN DATA	
Year of construction	1994	Principal dimensions	10.425 m x 5.25 m x 3.00 m
Registration	Rotterdam	Draught empty/loaded	0.55 m / N.A.
REMARKS		Max. tonnage sea/inland	N.A.
Test arrangements		Max. deck load	N.A.



SIDE VIEW



TOP VIEW DECK LEVEL