

# EQUIPMENT SHEET

**ROCKY I**  
SPECIAL PONTOON

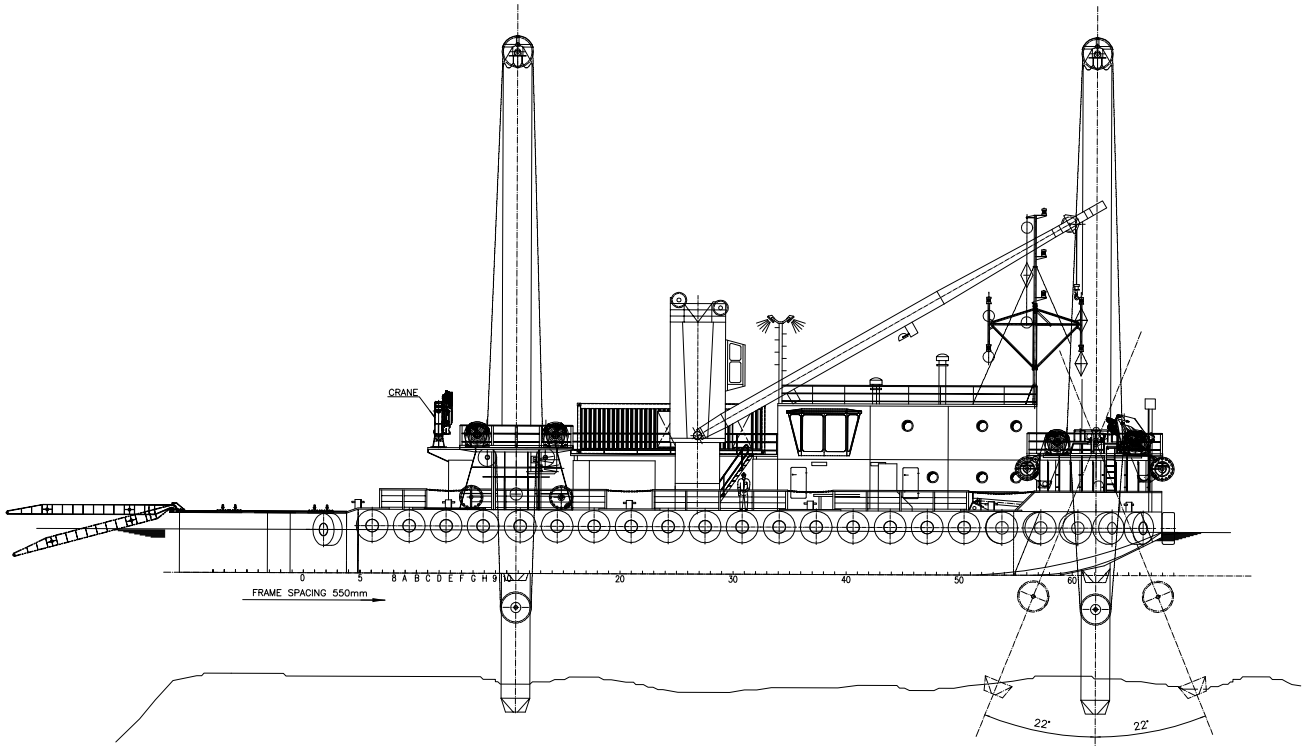


## CONSTRUCTION/CLASSIFICATION

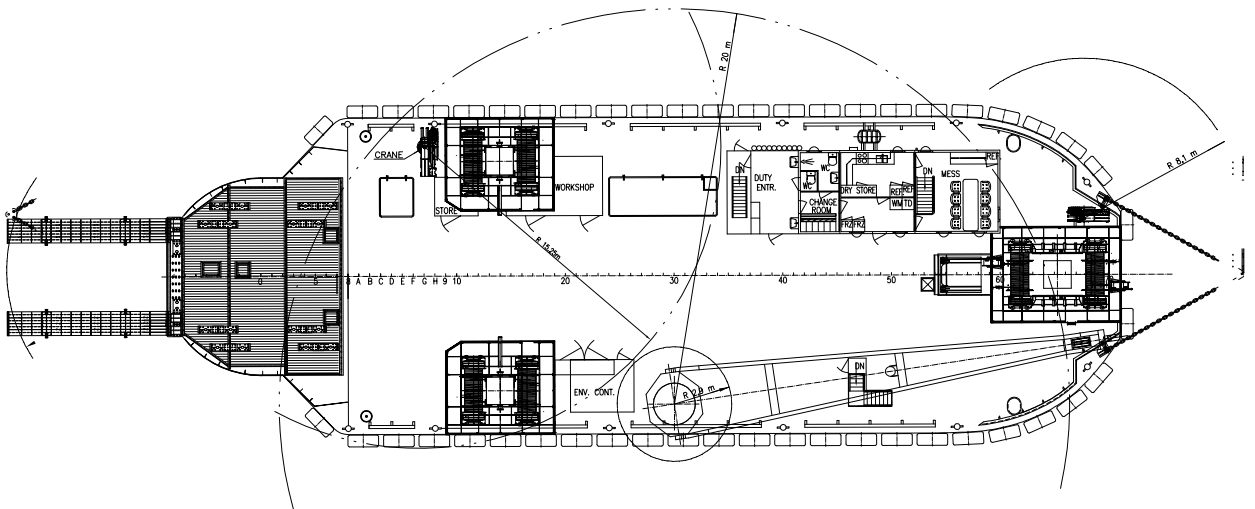
Built by	Feab Marstrandverken
Year of construction	1979
Year of modification	1997/2002 / 2013
Classification	B.V. I 3/3 Coastal Waters

## MAIN DATA

Gross tonnage	634
Length overall	50.80 m
Length pontoon	49.50 m
Breadth	16.00 m
Moulded depth	3.10 m
Minimum draught	2.10 m
Maximum draught	2.50 m
Anchoring system	3 spuds / Tilting spud
Total installed power	1,150 kW



**SIDE VIEW**



**TOP VIEW DECK LEVEL**

Royal Boskalis Westminster N.V.  
PO Box 43  
3350 AA Papendrecht  
The Netherlands  
T +31 78 69 69 000  
F +31 78 69 69 555  
royal@boskalis.com  
www.boskalis.com