

EQUIPMENT SHEET

CYRUS II
CUTTER SUCTION DREDGER



CONSTRUCTION/CLASSIFICATION

Built by	Shipyard "De Merwede"
Year of construction	1978
Year of modification	2003
Classification	BV Unrestricted navigation

FEATURES

A heavy duty rock cutting sea-going self-propelled dredger designed for operations in sheltered and coastal waters up to 15 miles offshore.

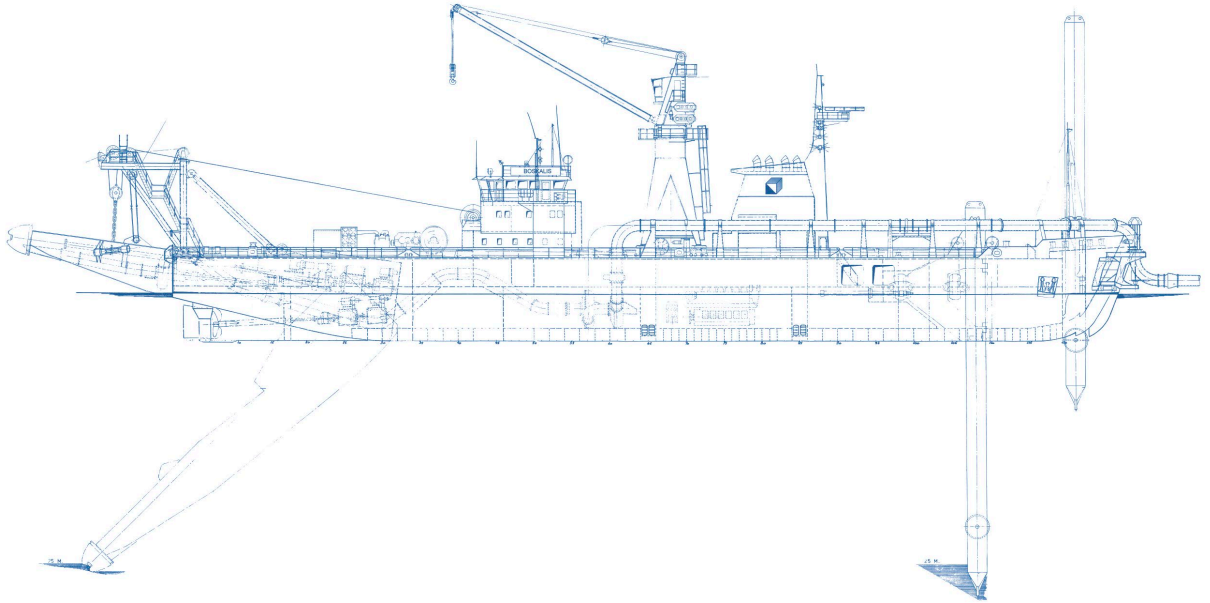
Suitable for both shallow and deep water conditions.

Equipped for working in hot, tropical climates and isolated locations.

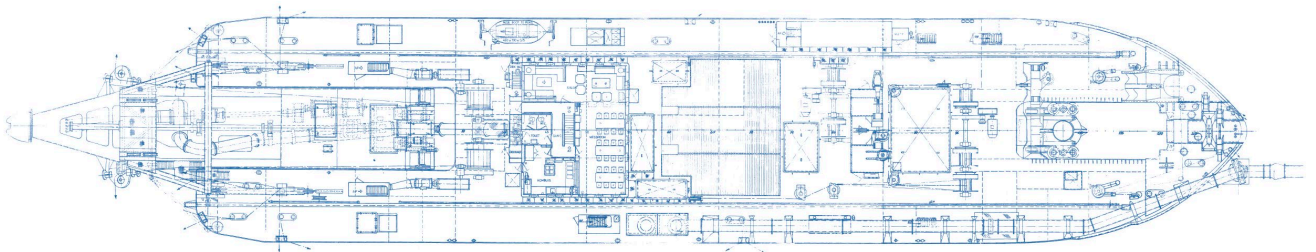
Spud carriage and anchor boom installation.

MAIN DATA

Gross tonnage	3,256
Length overall	107.00 m
Length pontoon	84.70 m
Breadth	19.00 m
Moulded depth	7.60 m
Max. draught	4.85 m
Suction pipe diameter	0.85 m
Discharge pipe diameter	0.85 m
Max. dredging depth	25.00 m
Anchoring system	Spuds/positioning anchors
Sailing speed	11.5 kn
Total installed power	12,904 kW
Cutter output	2,650 kW
Suction pump output	1,764 kW
Inboard pump output	6,250 kW
Propulsion power sailing	3,528 kW



SIDE VIEW



TOP VIEW DECK LEVEL