

# EQUIPMENT SHEET

**PHOENIX**  
STATIONARY, SEA-WORTHY CUTTER SUCTION DREDGER



## CONSTRUCTION/CLASSIFICATION

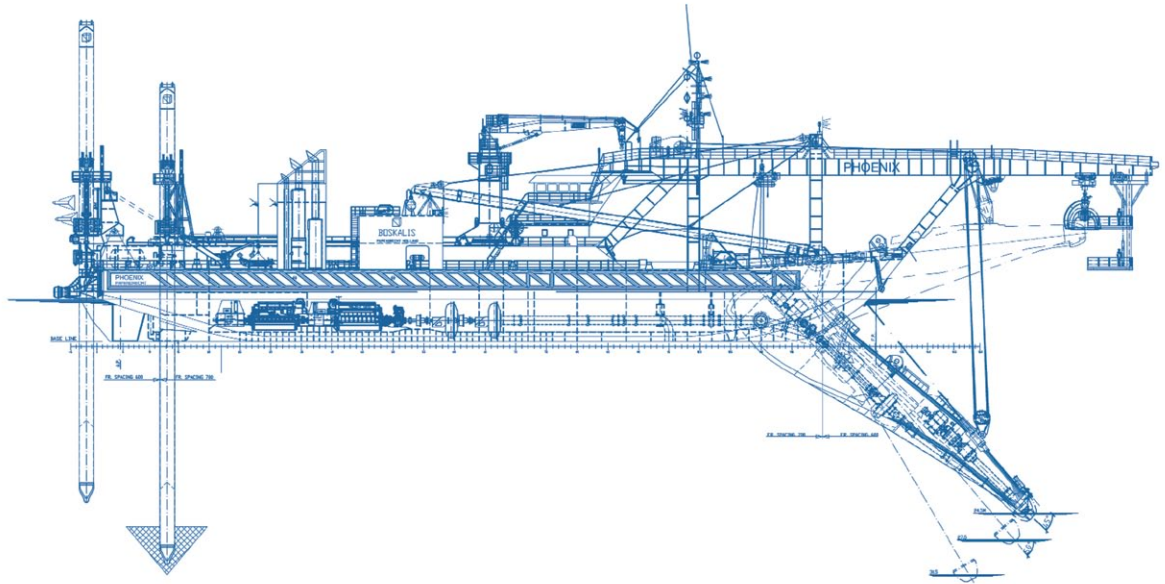
Built by	De Merwede (IHC Group)
Recommissioned by	ST Marine Singapore
Year of construction	In 1978 the Oranje was built as self-propelled cutter suction dredger.
Year of recommissioning	In 2007 the Oranje was converted into a non-propelled cutter suction dredger and renamed Phoenix.
Classification	Bureau Veritas I ✕ HULL ✕ MACH Dredger - No propulsion Unrestricted navigation

## FEATURES

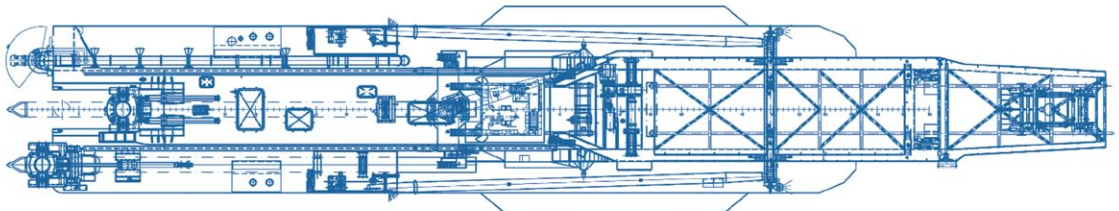
A heavy-duty, rock cutting, stationary dredger for operations in coastal waters up to 30 miles offshore and unrestricted towage.
Equipped for working in hot, tropical and isolated locations.
Fully equipped for dredging trenches, navigation channels and harbors.
Suitable for deep water dredging operations.
Fully automated dredging process centrally controlled.
Anchor booms for quick side anchor handling.
A barge loading facility is optional.

## MAIN DATA

Gross tonnage	4,347
Length overall	132.3 m
Length b.p.p.	86.22 m
Breadth	19.20 m / 23.70 m
Moulded depth	8.20 m
Max. draught	5.60 m
Suction pipe diameter	0.85 m
Discharge pipe diameter	0.90 m
Max. dredging depth	31.5 m
Min. dredging depth	7 m
Anchoring system	Spud carriage
Total installed power	15,800 kW
Cutter output	3,300 kW
Suction pump output	2,356 kW
Discharge pump output	2 x 3,600 kW



**SIDE VIEW**



**TOP VIEW DECK LEVEL**